

PUBLIC

AUCTION

Bidspotter.com™
To Become a Qualified Bidder on the Internet
See Instructions on Page 2

Ordered Sold by John K. Lane, Creditor Trustee

Huge Two-Day Auction of Extremely Well-Maintained Erecting and Demolition Equipment Including Construction Equipment, Cranes, Attachments, Trucks, Trailers, Paint / Blast Booths, Fabricating Machinery, Tools and Support Equipment

ALLIED CONSOLIDATED INDUSTRIES, INC.

1290 and 2100 Poland Avenue – Youngstown, Ohio 44502

Auction Office and Bidder Registration will be located at 1290 Poland Avenue, Youngstown, OH 44502

SALE DATES: WED. & THURS., SEPTEMBER 18TH & 19TH AT 9:00 AM

INSPECTION: DAY PRIOR FROM 10:00 AM TO 4:00 PM



(8) Excavators by Caterpillar and Komatsu, Modified for Heavy Demolition Use



60 Ton Grove RT760E Hydraulic Crane



(6) Caterpillar Loaders, Models 988, 950, 268, IT28, IT14



Paint and Blast Booths to 40' x 90' by GFS and Others, New as 2008



Large Capacity Fabricating and Welding Machinery



(6) Caterpillar Excavators, Models 345, 322, 314, 308



(50+) Excavator Attachments by Allied Gator and Others



500 Ton x 16' Cincinnati 500FM Series x 14 Hydraulic Press Brake



16" x 33" HEM Model WF160LA-DC-C Horizontal Band Saw



6' x 5/8" Roundo Type PS-255 Plate Bending Roll



90 Ton x 6' Cincinnati Model 90CBII x 6 Hydraulic Press Brake w/ CNC Back Gage



Approx. 1" x 12' Cincinnati Model 8N12 Hydraulic Squaring Shear



60 Ton Grove RT760E Hydraulic Crane

PAINT AND BLAST BOOTHS

90' x 40' Adjustable Height Modular Paint Booth w/ Roof Panel; Booth Constructed with (8) 40' Shipping Containers and (7) 12' Section Roof Panel System, Front and Back Wall 24" I-Beams, Containers Can Be Removed or Added to Side Walls for Height Adjustment, Each Container Has Paint Booth Lights In Side Walls and Insulation, Heavy Sliding Curtain

25' x 50' x 18' Global Finishing Solutions Model G8B-2520-DT-50 Drive-Thru Blast Booth; s/n 79984, Purchase Contract 1445, 10' Wide Bi-Fold Doors on Each End, Shot Recovery Systems, (4) Integrated Dust Collectors, Fresh Air System with (4) Connecting Ports Inside Blast Booth (2008)

26' x 60' x 18' Global Finishing Solutions Model CDG-60-xWPDT5 Drive-Thru Paint Booth; s/n 78019B, 10' Wide Bi-Fold Doors on Each End, Air Intake and Exhaust Filter Banks, Interior Lights, (3) Man Doors (2008)

Global Finishing Solutions Model CFA Natural Gas Fired Hot Air Make Up Unit; JOB # 653924, Unit TAG:MAU-1, Hourly BTU Rate (Min / Max) 220,000 / 6,221,000 (2007)

(2) Titan Air Incorporated Track Mounted Pneumatic Power Manlifts;

Inside Paint Booth, 18' Vertical Lift and 12' Horizontal Reach, 22" x 48" Work Platforms

Global Finishing Solutions Model MRG-9815 Paint Mixing Room; s/n 78019, 9' Wide x 21' Long Note: 18' Long Extension Added to Mixing Room (2007)

AIR COMPRESSORS & RELATED

(2) 50 HP Atlas Copco Model GA37FF Air Compressors; s/n AP1593127 (4,218 Hours) and AP1593133 (8,770 Hours), Each with Integrated Air Dryer and Oil / Water Separators (2007) – Used with Paint and Blast Booths

(2) 75 HP Gardner Denver Model EOKOKA Cabinet Type Air Compressors; s/n 766588 (11,991 Hours) and 766587 (11,217 Hours), 125 PSIG

(2) Flair Corporation Model 360DHA-EMI Desiccant Type Air Dryers; s/n 100002701516 and 100002701517 (2011)

(4) 1,000 Gallon Air Receiving Tanks
(2) 24 CFM Ingersoll Rand 2-Stage Air Compressors Powered by Kohler Gas Engines

FABRICATING MACHINERY

500 Ton x 16' Cincinnati 500FM Series

x 14 Hydraulic Press Brake; s/n 43310, 176" Between Side Frames, Cincinnati Form Master PB Control, 12" Stroke

Approx. 1" x 12' Cincinnati Model 8N12 Hydraulic Squaring Shear; s/n 37863 (This Machine is Totally Dis-Assembled for Re-Painting, Manuals Available)

90 Ton x 6' Cincinnati Model 90CBII x 6 Hydraulic Press Brake w/ CNC Back Gage; s/n 51163, 8' Bed and Ram, 8" Strokes, CNC Back Gage – Located at the manufacturing building

6' x 5/8" Roundo Type PS-255 Plate Bending Roll; s/n OB-2360, Hydraulic End Gate, 9" Diameter Rolls

16" x 33" HEM Model WF160LA-DC-C Horizontal Band Saw; s/n 979107, Job No. 06-476, 2" Wide x 26' Long Blade, Hydraulic Infeed and Clamping

Steiner Model RIP20080 Hydraulic Plate Straightening Press; s/n 558, 59" x 80" Bed, 20" Stroke

10 Ga. x 12' Cincinnati Model 1012 Mechanical Shear; s/n 24588, Back Gage

110 Ton Mubea Model HIW1000 Ironworker; s/n 016088165699, 6" x 6" x 5/8" Angle Shear, 24" x 5/8" Flat Shear, Notching

60 Ton x 6' Accurpress Model 7606 CNC Hydraulic Press Brake; s/n 28554L5

10,000 Lb. Aronson Model HD100

WEBCAST BIDDER INSTRUCTIONS

- > All Internet bidders must register for this auction at www.bidspotter.com at least 48-Hours Prior to the Sale Date, **if you do not you will not be approved.**
- > All Internet bidders must Post a Deposit of Approx. 25% of Your Planned Spending Budget or \$5,000.00 Minimum with Cincinnati Industrial Auctioneers in Order to be approved to Bid. Those who do Not Post the Deposit Will Not be Approved. **Period.**



(2) 50 HP Atlas Copco Model GA37FF Air Compressors



KRB Model 11H Hydraulic Re-Bar Bender



NEW 2008

25' x 50' x 18' Global Finishing Solutions Model G8B-2520-DT-50-S Drive-Thru Blast Booth



NEW 2008

26' x 60' x 18' Global Finishing Solutions Model CDG-60-xWPPTS Drive-Thru Paint Booth

Welding Positioner; s/n 5849, 48" x 48" Face Plate, Power Tilt and Rotation
(2) 5' x 8' Weldsale Acorn Type Welding Tables – Located at the manufacturing building
(2) CPC Production Tool C-Frame Presses
Enerpac H-Frame Press with Power Unit

HYDRAULIC CRANE

60 Ton Grove Model RT760E Rubber Tire Hydraulic Crane; s/n 221011, 180' Max Height, Auxiliary Jib, 29.5 – 25 Tires, 14,333 Hours

TRUCKS – ALL TYPES

1999 Peterbilt Model 379 Tri-Axle Twin Screw Tractor; Vin No. 1xP5DB9x8xD465889, Eaton Fuller 8-Speed Transmission, with 2-Speed Axle, Wet Kit, 523,067 Miles – DAY 1
(2) 1993 Kenworth Tandem Axle Road Tractors; Vin No. 2xKWDB9xOPM613893 (Units 135 – 280,992 Miles) and 2xKWDB9x9PM613892 (Unit 136 – 93,502 Miles), Eaton Transmission, Cat Engine – DAY 1
2002 Ford F650 Super Duty Single Axle

Service Truck; Vin No. 3FONF65H92MA27182, 7-Speed Transmission, Cat 3126 Engine, Equipped with Miller Trailblazer 302 Diesel Welder / 10 Watt Gen Set, Stellou Model 10620 Hydraulic Crane, IMT Model DA435HA Hydraulic Air Compressor, Grease Pump and Other Miscellaneous Tools, Truck Miles 210,148 – DAY 1

2001 Peterbilt Model 330 14' Single Axle Straight Truck; Vin No. 2NPNHP7x1M553261, 8-Speed Eaton Transmission, with 2-Speed Axle, 7.2 Liter Cat 3126 Engine, 8' x 14' Wood Deck, Flat Bed, GVWR 33,000, Miles 71,117 – DAY 1
2000 GMC 16' Stake Body Truck; Vin No. 1GDT6C1G38F403572, Automatic Transmission, A/C, 8.1 Liter Gas Engine, 16' Steel Bed with Side Racks, Lift Gate, 90,403 Miles, GVWR 25,950 – DAY 1
2007 GMC 2500 Four-Wheel Drive Pickup Truck; VIN 1GTHK29K07E557288, 6.0 Liter Engine, Toolbox, 232,785 Miles – DAY 1
2011 GMC 1500 Four-Wheel Drive Pickup Truck; Vin No. 1GTR2TEA3BZ435209, 4.8 Liter Vortec Gas Engine, 157,993 Miles – DAY 1

TRAILERS

1989 - 85 Ton Talbert Model WITT75HFN Detachable Neck Low Boy Trailer; Vin No. 40FW05841K3007973, Hydraulic Detach Feature, Lower Deck 23'6", Deck Over Axels 19', Unit 006
2004 - 45 Ton Talbert Model T4BDW-45-HRG-RA-I-TI Detachable Neck Low Boy Beam Trailer; Vin No. 40FSK58451024181, Tri-Axle w/ Aux. 4th Flip Up Axle, Hydraulic Detach Feature, Lower Deck 44" x 18'6", Deck Over Axles w/ Aux Axle Lowered 44" x 20', Unit 003
2011 - 53' Transcraft Model Eagle Curtain Side Trailer; Vin No. 1TT5332C4B3528389, with Chameleon Rolling Tarp System – Located at the manufacturing building
2006 Transcraft Model DTL2100 Tandem Spread Axle Step Trailer; Vin No. 1TTE4820281083673, Lower Deck 8' x 36', Top Deck 8' x 12', Unit 01-078
2006 Transcraft Model Eagle II Tandem Spread Axle Flat Bed Trailer; Vin No. 1TTF4820162014885
(2) 1999 Clement Hydraulic Dump Trailers; Vin No. 1C9BB30BxxM110461 (Unit 315) and 1C9BB30BxxM110460 (Unit 316) – DAY TBD



(3) Road Tractors by Peterbilt and Kenworth



2002 Ford F650 Super Duty Single Axle Service Truck



1989 - 85 Ton Talbert Model WITT75HFN Detachable Neck Low Boy Trailer



2011 – 53' Transcraft Model Eagle Curtain Side Trailer



2004 - 45 Ton Talbert Model T4BDW-45-HRG-RA-I-TI Detachable Neck Low Boy Beam Trailer



Numerous, Fuel, Lube and Stake Bed Trucks

BOTH DAYS – ALLIED CONSOLIDATED INDUSTRIES, INC.



(15) Forklifts by Taylor, Hyster and Cat to 36,000 Lbs. – BOTH DAYS



(2) Grove Manlifts to 125' - DAY 1

Late Model Misc. Construction Equipment – BOTH DAYS



Huge Quantity Heavy Contractors Equipment and Tools – BOTH DAYS



New Never Used Heavy Duty Pallet Rack, (2,000+) Beams and (1,000) Uprights – DAY ONE

LIFT TRUCKS

36,000 Hyster Model H360xL Diesel Lift Truck; s/n C019D01532L, 96" Forks, Perkins Engine, 2-Stage Mast, 147" Lift, 145" Mast, Weight 42,000 Lb. – **DAY 2**
33,000 Lb. Taylor Model GT330 Diesel Power Pneumatic Tire Lift Truck; s/n S-27-23690, Truck Weight 40,000 Lb., Hydraulic Fork Positioning, 100" Wide Carriage, 108" Forks, 142" Mast Height, Air Brakes, 8,210 Hours – **DAY 1**
12,000 Lb. Hyster Model S120xCS LP Gas Cushion Tire Lift Truck; s/n D004V098235, 2-Stage Mast, 112" Lift, 84" Mast – Located at the manufacturing building – **DAY 1**
8,000 Lb. Caterpillar Model V80E Diesel Power Pneumatic Tire Lift Truck; s/n 37-7291, 2-Stage Mast, 162" Lift Height, 98" Mast, 8,857 Hours – **DAY 1**
8,000 Lb. Caterpillar Model V80V Diesel Power Pneumatic Tire Lift Truck; s/n 37-6392, 3-Stage Mast, 160" Lift Height, 89" Mast – **DAY 1**

8,000 Lb. Lull Model 844C-42 Telescoping Forklift; s/n 99W21P22-2451, 8,227 Hours (1999) – **DAY 1**
8,000 Lb. Caterpillar Model V80C LP Gas Pneumatic Tire Lift Truck, 2-Stage Mast, 60" Forks, Side Shift – **DAY 2**
8,000 Lb. Caterpillar Model DP40 Diesel Pneumatic Tire Lift Truck; s/n 3CM00427, 2-Stage Mast – **DAY 2**
7,200 Lb. Caterpillar Model GC40K-STR LP Gas Cushion Tire Lift Truck; s/n AT8702203, 3-Stage Mast, Side Shift, 42" Forks – **DAY 2**
6,500 Lb. Hyster Model H70FT LP Gas Solid Pneumatic Tire Lift Truck; s/n L177VB8144J, 2-Stage Mast, 124" Lift Height, 88" Mast, Fork Positioning, 1,762 Hours – **DAY 1**
(4) 5,000 Lb. Linde Model H25D Diesel Powered Solid Pneumatic Tire Lift Trucks; s/n's H2x393C05424, H2x393C05517, H2x393C05886 & H2x393C05930, 2-Stage Mast, 131" Lift Height – **DAY 1**

4,000 Lb. Yale Model NR040 Electric Reach Truck; s/n C815N01805Y – **DAY 2**
MANLIFTS
2001 – 125' Grove Model A125J Diesel Four-Wheel Drive Man Lift; s/n 257231, Sliding Axles, Weight 48,400 Lb., 477 Hours Showing, Unit 58 – **DAY 1**
2000 – 86' Grove Model AMx86x6 Diesel Four-Wheel Drive Manlift; s/n 255219, Max Travel Height 80', Max Platform Height 80', Platform Size 35" x 96", 144" Wheelbase, Gross Weight 42,800 Lb., Hours 4,029 – **DAY 1**

ATTACHMENTS AND PARTS – Most day 2

(50+) Excavator Attachments, Accessories and Parts, Buckets, Sticks, Counterweights, Cylinders, Fork Attachments and Related
(50+) Loader and Skid Steer Attachments, Buckets (Some w/ Grapples) Bush Hog, Fork

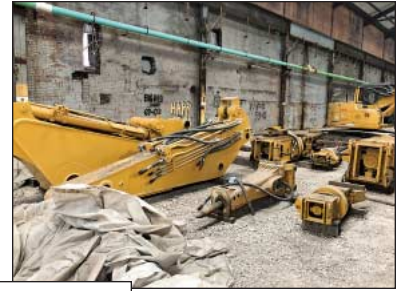
Attachments to 60", Counterweights and Related

(14) Various Size Conex Containers Containing Repair Parts Mostly for Caterpillar, Filters, Belts, Hydraulic, Fabricated Parts, Radiators, Starters, Excavator Generator Set by Linde, Other Excavator Accessories and Parts, Trailer and Other Vehicle Titles, Excavator and Dozer Tracks, Gears, Windows Shields and Many Other Related Items

MISC. CONTRACTORS EQUIPMENT

2006 Caterpillar Model 268B Skid Steer Loader; s/n JLB01116, 532 Hours – Located at the landscape building – **DAY 1**
Caterpillar Model 248B Turbo Skid Steer Loader; s/n BCSCLO1248, Solid Tire, A/C in Cab, Front Hydraulics, Unit 504 – **DAY 2**
Approx. (1,600) Steel Frame Concrete Forms; (17) Different Sizes, 24" x 72", 16" x 36", 18" x 96" & so forth, Approx. (500)

SALE DATES: WEDNESDAY & THURSDAY, SEPTEMBER 18TH & 19TH STARTING AT 9:00 AM



(50+) Excavator Attachments by Allied Gator and Others, Shears, Crushers, Grapples



Excavator Accessories, Sticks, Counterweights, Cylinders



(100+) Excavator and Loader Buckets of All Sizes, Some w/ Grappels



Large Quantity Construction Equipment Parts, Filters, Tracks, Cylinders, Etc.

Steel Curb Forms; Mostly 10' Long, All Necessary Hardware to Set Concrete Forms

(100+) Lots Misc. Contractors Tools, Portable Air Compressors, Gas and Diesel Power Welder Generators, Conduit Benders, Pipe Threaders, Lamina Mag Drill, Power and Hand Tools

(3) 2007 Landa Model SDHW6-3500 24-HP Diesel Power Pressure Washers; 275 Degree Max Temperature, 3,500 PSI, 5.2 GPM, Heavy Steel Frame Skid

(10) Gas and Diesel Power Portable Welders and Air Compressors

Tennant Model 550 LP Gas Floor Scrubber w/ Tow Behind LP Gas Vacuum; s/n 5899, 2,129 Hours – Located at the manufacturing building

(4) Other Electric Personnel Carts by Ingersoll Rand, Taylor Dunn and EVI – Located at the manufacturing building

Other Equipment, Ingersoll Portable Light Tower, Toro 41105 Liquid Sprayer Cart, (2) Temp Air THP-500A Natural Gas

Heaters – Located at the manufacturing building

(4) Conex Containers Loaded, Welding Accessories, Rigging Materials, Hardware Parts, Cabinets, Gang Boxes, DE Grinders, Mag Base Drills and Other Related Items – Located at the manufacturing building

Misc. Landscape and Contractors Equipment; (3) Multiquip Concrete Floats, Ridgid 300 Pipe Threader, Miller Big Blue 500 Diesel Welder Generator, Hustler 251K Zero Turn Mower, Snow Blower, Assorted Tools, Chain Saws, Weed Trimmers, Power Tools and Related – Located at the landscape building

NEW NEVER USED PALLET RACK – All Sold Day 1

Below counts are approx., all rack was purchased from an auction in new never used condition and never installed

(500) 72" Deep x 192" High Excel Storage Products Model F35 Teardrop

Uprights w/ 3" x 3" Columns (375) 48" Deep x 182" High Excel Storage Products Model F35 Teardrop Uprights w/ 3" x 3" Columns

(350) 48" Deep x 144" High Excel Storage Products Model F35 Teardrop Uprights w/ 3" x 3" Columns

(1,100) 144" x 6-1/2" Face Excel Storage Products Teardrop Cross Beams

(700) 144" x 6" Face Excel Storage Products Teardrop Cross Beams

(450) 120" x 6-1/2" Face Excel Storage Products Teardrop Cross Beams

(50) Other 144" x 4-1/2", 5" and 5-1/2" Face Excel Storage Products Teardrop Cross Beams

REBAR BENDER AND TESTER

KRB Model 11H Hydraulic Re-Bar Bender; s/n 06-B0634 – Located at the landscape building

Forney Copilot Concrete Tester – Located at the landscape building

CRANE TYPE LIFTING FIXTURES AND EQUIPMENT

(8) 8,000 lb. Voest-Alpine HSF7 Motorized Overhead Crane Coil Lifting Machines

(7) Overhead Crane Hooks to 60 Ton

(4) Crane C-Type Coil / Hooks, 4 to 30 Ton

Konecrane End Truck w/ 15 Ton and 10 Ton Hooks, 20' Working Height

ALL SALES ARE SUBJECT TO APPLICABLE PATENTS

Visit www.cia-auction.com for more photos



(2) 2002 Caterpillar Model 345 Hydraulic Excavators, Modified for Heavy Demo Use



(2) 2002 Caterpillar Model 322CL-ME Hydraulic Excavators



2005 Caterpillar Model 314CLCR Hydraulic Excavator



(5) Various GMC Pick-Ups to 2011



(5) Various Box, Fuel and Lube Trucks



(2) 2000 Komatsu Model PC1100-6H Hydraulic Excavators, Modified for Heavy Demo Use

EXCAVATORS

Most heavily modified for demolition use including heavy-duty high-speed hydraulics with extra tool member controls, reinforced frames, heavy guarding and other modifications

(2) 2000 Komatsu Model PC1100-6H Hydraulic Excavators; s/n H10029 (Year 2000 – 16,046 Hours) and H10028 (Year 2000 – 15,042 Hours), Each Generator Sets for Magnets, 28" Wide Tracks, AC in Cab, Window Shields, Extra Hydraulics, Units 236 and 237

2002 Caterpillar Model 345BLME-VG Hydraulic Excavator; s/n 7KS00842, 35-1/2" Wide Tracks, 11,692 Hours, **New Engine Installed August 2019,** Unit 202

2002 Caterpillar Model 345BL-VG Hydraulic Excavator; s/n CCC00448,

29-1/2" Tracks, Generator Set, Window Guard, AC in Cab, 13,555 Hours, Unit 203

2002 Caterpillar Model 322CL-ME Hydraulic Excavator; s/n BKJ00617, Generator Set, AC in Cab, 48" Magnet, 11,193 Hours, Unit 130

2002 Caterpillar Model 322CL Hydraulic Excavator; s/n BKJ00644, 27-1/2" Wide Tracks, Cab AC, Window Shield, 4,793 Hours Showing, Generator Set, Unit 128

****2005 Caterpillar Model 314CLCR Hydraulic Excavator;** s/n SNPCA00835, 27-1/2" Wide Tracks, 24" Wide Hydraulic Ditch Compactor Attachment, Hour Meter Not Working

2002 Caterpillar Model 308CCR Hydraulic Excavator; s/n CPE00995, Cab AC, Window Shield, 89" Front Blade, 1,531 Hours Showing, Unit 111

LOADERS

Caterpillar Model 988 Articulating Wheel Loader; s/n 8Y601373, Solid Tires, 84" Forks, 754 Hours Showing

• **Dymax Model 5244D1 Boom Attachment (Like New);** s/n 152454, 8' Long Main Arm with Telescoping End to approx. 12' Overall Reader – To Be Sold Separate

• **82" Wide Bucket Adaptor Attachment**

2001 Caterpillar Model 950G Articulating Wheel Loader; s/n 3JW01992, Solid Tires, Quick Disconnect, Auxiliary Circuit, AC in Cab, 111" Wide Bucket, 8,619 Hours, Unit 336

Caterpillar Model 950G Articulating Wheel Loader; s/n T3JW02490, Cat 90G/ 962 Bucket,

****ITEMS MARKED WITH ** SUBJECT TO WITHDRAW FROM AUCTION BY CREDITOR TRUSTEE**



ALL SALES ARE SUBJECT TO APPLICABLE PATENTS



**** (150) Containers Loaded w/ Unassembled Components, Parts, Castings and Fabrications**



(2) 2002 Caterpillar Model 345 Hydraulic Excavators, Modified for Heavy Demo Use

No. B1E01991 / 209666 with Grapple Attachment, 17,583 Hours, AC in Cab, Unit 330

2002 Caterpillar Model IT28G Articulating Rubber Tire Wheel Loader; s/n 4tf76145 OR cat it28gchr03645, Solid Tires, Quick Disconnect Feature, 93" Wide Bucket (Approx. 2-1/2 Yard), 17,878 Hours, Unit 314

Caterpillar Model IT14B Rubber Tire Loader; s/n 3NJ00060, 21,804 Hours NOTE: Rotating Fork Attachment Sold Separate, Unit 321

MAGNETS

(65) Electric Scrap Magnets of all Sizes and Shapes

ALLIED GATOR ATTACHMENTS AND EQUIPMENT

**** (25) Allied Gator Attachments w/ Shear, Cracker Jaw and Densifier End Tools;** Main Bodies, (2) MT-160, (1) MT-100, (4) MT-90, (4) MT-70, (1) MT-50, (2) MT-40, (1) MT-20, (3) MT-10

***The MT Series Multi-Tool can be configured as a Shear for demolition and scrap processing, a Cracker/Crusher for concrete reduction, cast and rail processing, or a Densifier™ for material handling and compressing.*

****Misc. Attachments, Modified Loader Buckets w/ Heavy Grapple Attachments, Excavator Sticks, Excavator Buckets, Counterweights, Couplers and Related**

**** (150) Containers Loaded w/ Unassembled Components, Parts, Castings and Fabrications**

CONEX STORAGE CONTAINERS

Most Manufactured 2007 by CPI Containers Providers International

**** (46) 8' x 20' – 1,094 Cu. Ft. Units w/ Standard End Door and Side Entrance Doors,** **Approx. (31) Loaded w/ Parts Subject to withdraw from auction by Bankruptcy Trustee

**** (145) 8' x 10' – 563 Cu. Ft. Units w/ Standard End Doors,** **Approx. (119) Loaded w/ Parts Subject to withdraw from auction by Bankruptcy Trustee

(15) 5' x 8' Units w/ Doors on Each End

MACHINE SHOP

40,000 Lb. Aronson Model HD400A Positioner; s/n 7950, 96" Diameter Face Plate

10,000 lb. Aronson Welding Positioner; s/n 77333, 48" x 48" Face Plates

350 Ton C-Frame Hydraulic Press, 15" Diameter Ram

10' x 24' Oxy / Plasma Burning Table w/ Bunny 10LCD Control; (3) Oxy / Acetylene Heads, (1) Plasma Head, Airco Tracer Attachment, Hypertherm 1650 Plasma Power Source

Marvel Model 8-Mark II Vertical Band Saw; s/n 826004-W
8' Arm x 17" Column Cincinnati Bickford Radial Arm Drill

22" x 96" Monarch Engine Lathe; s/n 41543, 12" 3-Jaw Chuck, Tailstock
Welding Equipment, (5) Miller and Lincoln Mig, Tig and Arc Welders, HD Steel Welding Tables, Clamps, Tools, Related

Sullair Model 12-50L Air Compressor; s/n 003-54717, 37,124 Hours

(2) 10 HP Ingersoll 2-Stage Air Compressors

Skat-Blast 48" Abrasive Blast Cabinet with Dust Collector
Parker Hydraulic Hose Crimping Machine

(10) Vidmars with Tooling and Hardware
(50) Sections of Shelving with Large Quantity of Parts and Hardware

TRUCKS – ALL TYPES

2000 Freightliner Fuel / Lube Truck; Vin No. 1FV6HFBA4YHF05703, 800 Gallon Fuel Tank, Oil Pump, Unit 680 – **DAY 2**

1993 Chevy Fuel Truck; Vin No. 1GBS7H4J8PJ102032, 300 Gallon Fuel Tank, Unit 687 – **DAY 2**

1980 International Fuel Truck; Vin No. AA172KHB1588 (Unit 685) – **DAY 2**

Ford E350 12' Straight Truck; Vin No. 1FDWE3054WH82463 – **DAY 2**

(2) 2004 GMC 16' Box Trucks; Vin No. 1GDJG31U341911079 (Unit 689 – 114,261 Miles) and 1GDJG31U841908131 (Unit 690 – Miles N/A) – **DAY 2**

2004 GMC 2500HD Pickup Truck; Vin No. 1FDWE3054WH82463 – **DAY 2**



(2) Caterpillar Model 950G Articulating Wheel Loaders



(2) Caterpillar Model 950G Articulating Wheel Loaders



Caterpillar Model 988 Articulating Wheel Loader



Caterpillar IT28 and IT14 Articulating Wheel Loaders



Machine Shop w/ Heavy Welding, Fabricating, Toolroom and Support Equipment



(65) Electric Scrap Magnets of all Sizes and Shapes

PUBLIC PUBLIC

AUCTION

ORDERED SOLD BY JOHN K. LANE, CREDITOR TRUSTEE

Huge Two-Day Auction of Extremely Well-Maintained Erecting and Demolition Equipment Including Construction Equipment, Cranes, Attachments, Trucks, Trailers, Paint / Blast Booths, Fabricating Machinery, Tools and Support Equipment

ALLIED CONSOLIDATED INDUSTRIES, INC.

1290 and 2100 Poland Ave.
Youngstown, Ohio 44502

SALE DATES:
WED. & THURS.
SEPT. 18TH & 19TH
STARTING AT 9:00 AM

INSPECTION: Day Prior from
10:00 AM to 4:00 PM



CINCINNATI
INDUSTRIAL
AUCTIONEERS

auctioneers | appraisers | since 1961

Contact Information
2020 Dunlap St.
Cincinnati, Ohio 45214
Phone 513-241-9701
Fax 513-241-6760
www.cia-auction.com

Cincinnati Industrial Auctioneers Inc.
2020 DUNLAP STREET
CINCINNATI, OHIO 45214

Myron Bowling Auctioneers Inc.
P.O. BOX 369
ROSS, OHIO 45061

PRE-SORT
FIRST CLASS
U.S. POSTAGE
PAID
CINCINNATI, OHIO
PERMIT NO. 3593

FIRST CLASS MAIL!



(3) Excavators



Crane



Important Mail

TO BE DIRECTED TO THE ATTENTION OF EXECUTIVE PERSONNEL

PUBLIC

AUCTION

PUBLIC

Ordered Sold by John K. Lane, Creditor Trustee

Huge Two-Day Auction of Extremely Well-Maintained Erecting and Demolition Equipment Including Construction Equipment, Cranes, Attachments, Trucks, Trailers, Paint / Blast Booths, Fabricating Machinery, Tools and Support Equipment

ALLIED CONSOLIDATED INDUSTRIES, INC.

1290 and 2100 Poland Ave.
Youngstown, Ohio 44502

IMPORTANT NOTICE:

Although information has been obtained from sources deemed reliable, the auctioneer makes no warranty or guarantee, expressed or implied, as to the accuracy of the information herein contained. It is for this reason that buyers should avoid themselves of the opportunity to make inspection prior to the sale. This brochure is intended to provide general information of the equipment being offered and is subject to errors, omissions, additions or deletions. Please check with the Auctioneer's Office for a final listing. Items offered may or may not necessarily be sold as described and/or photographed in this brochure.

MAIL BIDS ACCEPTED WITH A 25% DEPOSIT

TERMS OF SALE

All equipment described herein will be sold "as is", "where is" to the highest bidder or bidders for cash in accordance with our regular terms and conditions of sale. Unless other satisfactory arrangements are made, a 25% deposit in cash, certified or cashier's check payable to Cincinnati Industrial Auctioneers, Inc., is required on all purchases. Firm and personal checks accepted only if accompanied by a letter from your bank guaranteeing your funds. All sales are subject to state and/or local taxes unless a signed exemption form is presented at the time of purchase. All balances are due at the conclusion of the sale. No merchandise may be removed while the sale is in progress. All bidders must comply with our Standard Terms of Sale, copies of which will be available at the sale site or can be obtained from our website.

DIRECTIONS

Auction office and bidder registration for both days will be located at 1290 Poland Ave.. Day one will start at 1290 Poland Ave., Day 2 will start at 2100 Poland Ave.. Please call with questions, use GPS for best results.

AUCTIONEER

Cincinnati Industrial Auctioneers, Inc. – License No. 63-1983-10439
Jeffrey L. Luggen – License No. 57-1983-33789
Jerome A. Luggen – License No. 62-1983-33799
Myron Bowling Auctioneers, Inc. – 63198514949
Myron C. Bowling – License No. 62-1976-20939

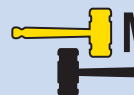


15% ONSITE BUYERS PREMIUM
18% ONLINE BUYERS PREMIUM



CINCINNATI
INDUSTRIAL
AUCTIONEERS

cia-auction.com • Phone 513-241-9701



MYRON BOWLING
AUCTIONEERS, INC.

myronbowling.com • Phone 513-738-3311